

# MARCELLE RUTH

CANCER CENTRE & SPECIALIST HOSPITAL

**MRCC NEWSLETTER**  
**Q4 2024**



JANUARY 2025

ISSUE No 05

CLINICAL  
OPERATIONS

OTHER SPECIALIST  
SERVICES

RESEARCH &  
DEVELOPMENT

MRCC FOUNDATION  
NGO

ACTIVITIES &  
EVENTS

# Table of Contents

**02** WELCOME ADDRESS BY CEO

---

**04** CLINICAL OPERATIONS

---

**08** RESEARCH & DEVELOPMENT

---

**12** MRCC FOUNDATION

---

**14** ACTIVITIES & EVENTS





# WELCOME!

## From the CEO

As we close 2024, the Marcelle Ruth Cancer Centre and Specialist Hospital reflects on a year defined by remarkable milestones, innovation, and unwavering dedication to transforming cancer care. Our highlights of 2024 include:

**Affordable World-Class Radiotherapy:** Equipped with cutting-edge technology, our radiotherapy services continue to provide accessible, effective treatment, setting a high standard for cancer care in Nigeria.

**Launch of the Psychology Clinic:** Addressing the emotional and psychological challenges of cancer, our new clinic provides tailored support to patients and their families, reinforcing holistic care as a cornerstone of our mission.

**New Women's Health Clinic:** With Dr Simisola Alabai, a UK trained General Practitioner motivated to improving female healthcare. Services range from menstrual health, weight management, contraception and more.

**Precision Oncology Collaboration:** By partnering with Illumina, we're integrating next-generation sequencing (NGS) into our framework, offering personalized, precise treatment strategies to bridge gaps in cancer care.

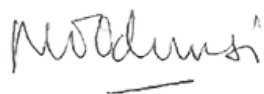
**Breakthrough Genomic Research:** Our Research and Development team has embarked on two landmark studies to decode the African genome, advancing understanding of cancer's unique dynamics within the region.

**Community Impact through the MRCC Foundation:** Our foundation extended its reach with impactful health initiatives, uplifting underserved communities and showcasing our commitment to holistic community well-being.

These achievements would not have been possible without the tireless dedication of our exceptional staff, the support of our partners, and the courage of our patients. Together, we are shaping a brighter future for cancer care, breaking barriers in research, treatment, and community outreach.

As we prepare for 2025, we're inspired to build on this year's successes. Thank you for being part of this journey, and for your continued trust in us to deliver excellence in healthcare.

Warm regards,



DR MODUPE ELEBUTE-ODUNSI,  
CEO MARCELLE RUTH CANCER CENTER & SPECIALIST HOSPITAL



# Meet the Team



**DR. MODUPE ELEBUTE-ODUNSI**  
CEO / Director of Haemato-Oncology



**BOLAJI ODUNSI**  
Chairman

## Senior Management



**DR. ADEDAMOLA OMOGBEHIN**  
Director of Clinical & Radiation Oncology



**OLUFUNKE FORESYTHE**  
Director of Outpatient and Client Services



**MODUPE DADA**  
Director of Operations

## Clinical Admin



**DR. OLUWAFEMI AKINWUNMI**  
Head of Laboratory



**MATRON CHIJI ACHOMADU**  
Head of Nursing



**OBINNA ASOGWA**  
Head of Radiotherapy



**PHARM VIVIAN OSEGHALE**  
Head of Pharmacy



**OLUYEMISI OSAKWE**  
Research Operations Lead

## Operational Admin



**OPEYEMI SAMUEL**  
Human Resources



**FUNKE ALESINLOYE**  
Head of Finance



**EMMANUEL AGBO**  
Head of IT



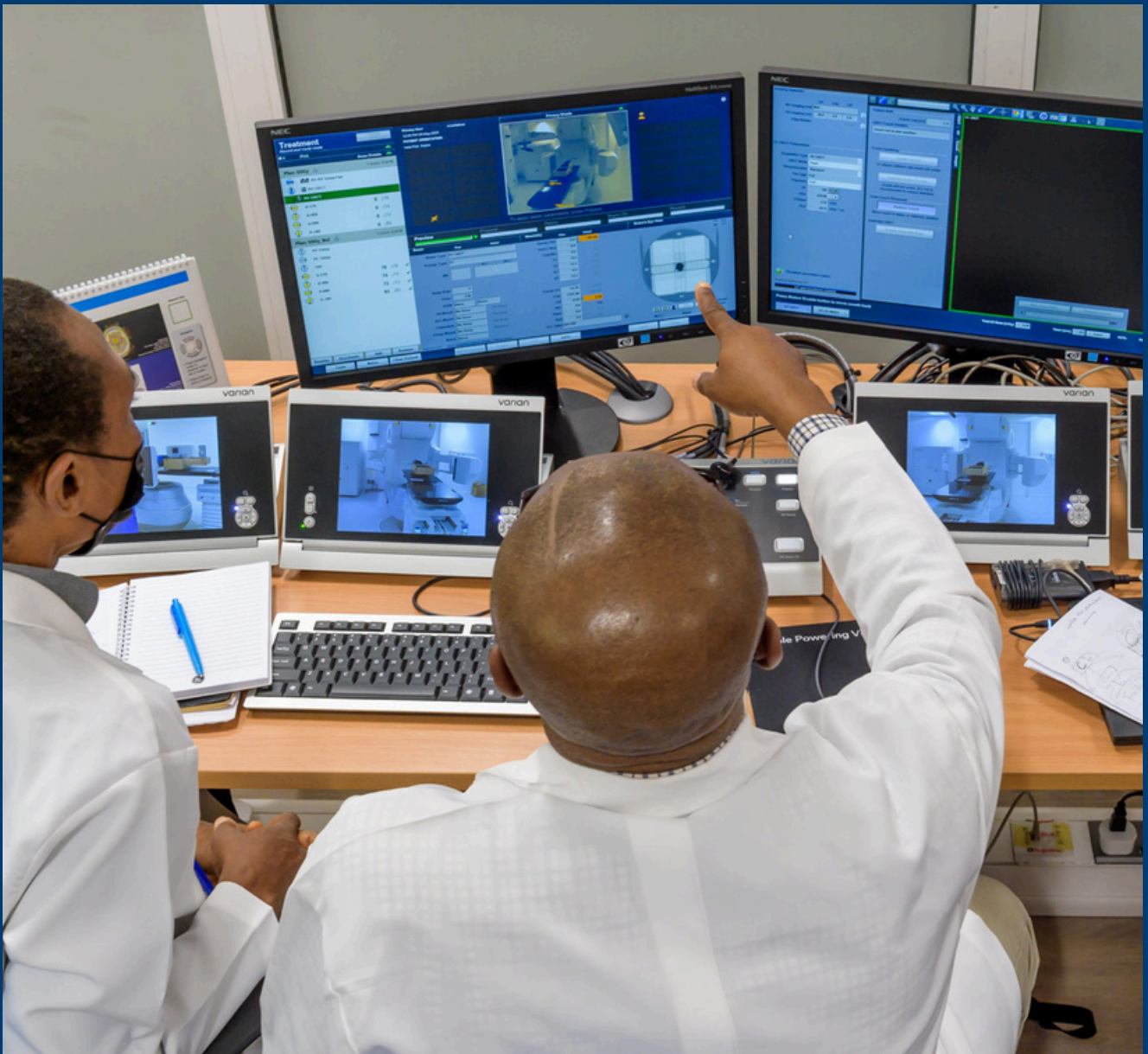
**PATIENCE UDEALOR**  
Head of House Keeping



**TIMOTHY ATEGBERE**  
Head of Facility



# Clinical Operations



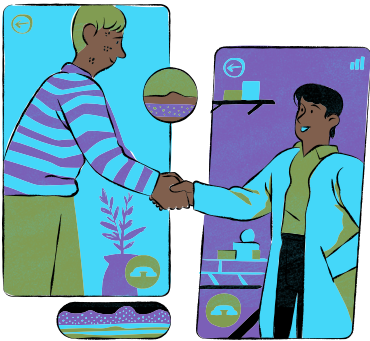
# Over 4,000 patients seen!

\*Since 2021 – over 100 new patients per month



## General and Specialised Consultations

General consultations address a wide range of health concerns, while specialized consultations focus on oncology, hematology, and other advanced medical fields. These services ensure precise diagnosis, personalized treatment planning, and ongoing care for optimal health outcomes.



## Advanced Diagnostic Tests

Leveraging on cutting-edge technology for accurate and early detection of diseases. These include imaging, laboratory tests, and genetic profiling to support precise diagnoses. The facility also offers world-standard radiotherapy techniques, ensuring effective and targeted treatment for cancer patients.



## One-Stop Centre for a Variety of Services

MRCC serves as a one-stop centre offering a wide range of services not just limited to specialised oncology care, but also includes concierge health checks and comprehensive family medicine. This integrated approach ensures convenience, continuity of care, and exceptional patient outcomes.





# MRCC SPECIALIST SERVICES

In addition to expert cancer care, Marcelle Ruth offers an array of additional specialist services, including:



FAMILY MEDICINE



UROLOGY



GENERAL SURGERY



ORTHOPAEDICS



HAEMATOLOGY



ENT



SICKLE CELL CLINIC



DERMATOLOGY



OPHTHAMOLOGY



NUTRITION



NEUROLOGY &  
STROKE MANAGEMENT



CONCIERGE HEALTH  
CHECKS

# NEW! WOMEN'S HEALTH CLINIC

*With* **DR SIMI (UK TRAINED GP)**

## SERVICES

- Holistic Primary Healthcare Exclusively for Women
- Menstrual Health
- Hormonal Care
- Premenstrual Syndrome Care
- Perimenopausal Health
- Menopause Education and Care
- Weight Management
- Family Planning and Contraception
- Coils, Implants, and Injections
- Excision of Lumps and Bumps (Minor Surgery)
- Aesthetic Treatments

### OFFICE OPENS

Wednesdays: 10-6pm

Alternate Saturdays: 9-2pm

### CONTACT INFORMATION

Phone: +2349062000773

Email: [info@marcelleruth.com](mailto:info@marcelleruth.com)

Website: [www.marcelleruth.com](http://www.marcelleruth.com)

### LOCATION

Marcelle Ruth Cancer Centre and Specialist Hospital  
Plot 1192D Olubosi Close  
Victoria Island, Lagos.

## Dr. Simisola Alabi

MBBS MRCGP MSc Health Policy & Leadership  
DFSRH DRCOG PgCert Med. Ed





MARCELLE RUTH  
RESEARCH & DEVELOPMENT

# Research & Development



# R

# &

# D

## RESEARCH STUDIES

Genomic studies and clinical trials offer personalized treatments, shape healthcare, and drive global progress, delving into disease understanding and improving patient outcomes.



## DEVELOPMENT

Through data analysis and interpretation - research Assistants analyze research data using statistical and phenotypic methods to generate insights that contribute to hospital professionalism and medical practice.

The R&D department collaborates with research institutions and industry partners such as Yemaachi to foster joint projects and knowledge exchange, addressing cancer-related challenges.

ARE YOU INTERESTED IN PROVIDING INVESTMENT, GRANT FUNDING, OR CLINICAL TRIAL OPPORTUNITIES?  
PLEASE CONTACT:  
[RESEARCH.DEVELOPMENT@MARCELLERUTH.COM](mailto:RESEARCH.DEVELOPMENT@MARCELLERUTH.COM)  
OR CALL +234 906 669 5234



## ILLUMINA PRECISION ONCOLOGY WORKSHOP AT COVENANT UNIVERSITY

The Precision Oncology Workshop, hosted by Illumina, aimed to equip oncologists, researchers, and laboratory personnel with cutting-edge knowledge and practices to improve oncology care across Nigeria. It emphasized the importance of genomic research, early detection, and collaboration in transforming cancer care.



We heard inspiring remarks from dignitaries such as Mrs. Regina Tobi-David, Registrar of Covenant University, and Prof. Dr Emeka Iweala Centre Leader of the Covenant Applied Informatics and Communication Africa Centre of Excellence CAPIC ACE.

Key presentations included Dr. Boutros Maroun's, senior manager medical affairs at Illumina in AMEA region, introduction to precision oncology, discussing its concepts, challenges, and opportunities for Africa. Prof. Solomon Rotimi, Associate Professor of Biochemistry at Covenant University, Nigeria, gave a talk on the global landscape of cancer genomics and its adaptation to the African context. His compelling insights emphasized the need for more collaboration and focused attention on African genomic data collection and clinical trials. Additionally, Mrs. Yemisi Osakwe, our Research Operation Lead at Marcelle Ruth Cancer Centre & Specialist Hospital, highlighted the importance of precision medicine and shared updates on our research studies, GEN-PRO (African Genomics data collection) and BRECAN-NG (focused on breast cancer cases).

The sessions provided deep insights into cutting-edge research practices, with participants gaining practical skills and a thorough understanding of the processes. To cap it off, attendees were awarded certificates, marking the successful completion of the workshop.



# ONGOING RESEARCH STUDIES

Take Part **NOW** and be part of our movement to improve clinical research in Nigeria!



MARCELLE RUTH  
RESEARCH & DEVELOPMENT



**TURN HOPE INTO REALITY**

**JOIN OUR GEN-PRO STUDY**

Discover the power of your genes in fighting disease. Your DNA could hold the key to better health. Join our study and make a difference.

SCAN THE QR CODE TO SIGN UP



**Contact Us**

- +234 906 669 5234
- research.development@marcelleruth.com
- Marcelle Ruth Cancer Centre and Specialist Hospital  
Plot 1192D Olubosi Close, Victoria Island, Lagos, Nigeria

## GENOMIC PROFILING OF ONCOLOGY PATIENTS IN A PRIVATE HOSPITAL - LAGOS, NIGERIA

- **AIM:** To investigate the genetic differences amongst cancer patients in Nigerians
- **WHO CAN JOIN:** Anyone aged 12 years and above
- **HOW TO JOIN:** Ask a representative in Marcelle Ruth or call +234 906 669 5234 for more information.



MARCELLE RUTH  
RESEARCH & DEVELOPMENT



**CALLING ALL HEROES!**

**JOIN OUR BRECAN-NG STUDY**

Join our study and help us uncover the genetic secrets of familial breast cancer in Nigeria.

SCAN THE QR CODE TO SIGN UP



**Contact Us**

- +234 906 669 5234
- research.development@marcelleruth.com
- Marcelle Ruth Cancer Centre and Specialist Hospital  
Plot 1192D Olubosi Close, Victoria Island, Lagos, Nigeria

## CHARACTERISING FAMILIAL BREAST CANCER GENETIC RISK FACTORS IN NIGERIA

- **AIM:** To investigate the genetic causes of breast cancer in Nigerians
- **WHO CAN JOIN:** Anyone between 18 and 55 years with breast cancer and at least **one** other family member who has been diagnosed with breast cancer

MARCELLE RUTH  
FOUNDATION

# Non-Governmental Organisation





# Early Detection Saves Lives!



The Marcelle Ruth Foundation ensures that indigent patients at MRCC receive essential medical care, regardless of financial barriers. Through generous contributions, the Foundation provides financial aid, easing the cost of cancer treatment while upholding quality care. Additionally, it offers emotional support and raises awareness through screenings, outreach programs, and community events, promoting early detection and uniting the community in the fight against cancer.

Make a real impact by donating, volunteering, or joining our awareness efforts. Together, we can bring hope and support to those affected by cancer, creating a brighter future for all.

**SUPPORT OUR CAUSE:**  
ACCOUNT: MARCELLE RUTH FOUNDATION  
ACCOUNT NUMBER: 1771874156

# Activities & Events







A Siemens Healthineers Company

## STRENGTHENING PARTNERSHIPS FOR QUALITY HEALTHCARE: A VISIT FROM SIEMENS LEADERSHIP

We had the honor of hosting Mr. Ashok Kakkar, VP and Zonal Head of Varian, Siemens Healthineers, along with his team: Kevin Massoudi, VP and Head of Public Sector Engagement; Ansu Dukuray, Managing Director of Radiation Oncology Solutions, Eastern Africa; Fola Makanjuola, Senior Project Manager/Program Manager at TANIT; and Kunal Samani, Strategy Consultant, at our facility.



During their brief visit, they toured our world-class facilities and met our dedicated team. We discussed the tremendous progress we've made over the years, the impact of our hospital, and the importance of access to top-quality medical equipment, which has been pivotal in delivering first-class care and treatment.

Our sincere thanks to Mr. Ashok Kakkar and his team for taking the time to visit and gain insights into our achievements thus far. We are excited about the future and remain committed to expanding access to quality healthcare for our patients.





# MRCC EDUCATIONAL SERIES



MRCC's Educational Series is dedicated to empowering patients, caregivers, and healthcare professionals with the latest insights on cancer treatment and prevention. The sessions cover topics such as managing a cancer diagnosis, nutrition, coping strategies, and cutting-edge therapies like radiotherapy and genomic testing.

## ÒRÍ by Zayne & Reid

We had the opportunity to be educated on the benefits of ÒRÍ by Zayne & Reid. A beauty company that ensures the highest quality by ethically sourcing and refining African oils with cutting-edge techniques.

They educate Healthcare practitioners on the power of African seed oils, blending traditional beauty practices with modern skincare. Their mission is to redefine beauty standards using the finest raw ingredients.



Expert speakers lead interactive discussions, fostering a supportive community.

## Insights on Type II Diabetes

An educational-led discussion on Glucophage XR, a widely used medication for managing type 2 diabetes. It works by improving the body's response to insulin, reducing glucose production in the liver, and enhancing the absorption of sugar in the cells. This helps to lower blood sugar levels, making it a cornerstone in diabetes treatment.

What sets Glucophage XR apart is its extended-release mechanism, which allows the medication to be absorbed more gradually over time. This results in fewer gastrointestinal side effects, such as nausea or upset stomach, commonly associated with other metformin formulations. Its once-daily dosing schedule also makes it convenient for patients to incorporate into their routine.

In addition to controlling blood sugar, Glucophage XR has been shown to have cardiovascular benefits, reduce insulin resistance, and even aid in weight management.

# NIGERIAN ASSOCIATION OF MEDICAL PHYSICISTS 2024 CONFERENCE, ABUJA



Nigerian Association of  
**Medical Physicists**  
- NAMP -

The 2024 NAMP Conference in Abuja witnessed a remarkable showcase of cutting-edge research by Clinical Medical Physicists from MRCC. Under the theme "Medical Physics: Improving Medicine, Shaping the Future of Healthcare," we delved into crucial aspects of radiation therapy techniques, dosimetry, and machine maintenance, pivotal for elevating cancer treatment standards and streamlining operational efficiency in radiotherapy environments.



Shedding light on the dosimetry intricacies of Intensity-Modulated Radiation Therapy (IMRT) for breast cancer patients, our study at MRCC focused on optimizing treatment planning by scrutinizing skin and heart dose metrics. By pinpointing strategies to reduce radiation exposure to healthy tissues, the research aims to enhance the precision and efficacy of breast cancer therapies.

Analyzing the dosimetric implications of Flattening-Filter-Free (FFF) beams versus Flattened (FF) beams in Volumetric Modulated Arc Therapy (VMAT) for localised

prostate cancer, our MRCC study offers insights into delivering optimal radiation doses while safeguarding healthy tissues. This comparative analysis serves as a valuable compass for tailoring personalized prostate cancer treatments.

Unveiling the significance of regular maintenance on the operational efficiency of the TrueBeam Linear Accelerator, the research underscores the pivotal role of routine equipment checks and calibration. By ensuring peak performance of the machine, the study advocates for heightened treatment accuracy, thus reducing downtime and enhancing overall patient care.

These insights underscore our unwavering commitment towards refining treatment precision, elevating patient outcomes, and spearheading advancements in radiation oncology, setting a benchmark for the future of healthcare.



# WIHCN 1ST ANNUAL CONFERENCE



On November 1, 2024, Lagos became the epicenter of progress in women’s healthcare as the inaugural Women in Healthcare Network (WIHCN) Annual Conference brought together over 400 professionals from Nigeria, Ghana, Liberia, the UK, and the US. With the theme “Resilience in Healthcare and Thriving Through Challenges,” the event fostered collaboration, learning, and celebration, providing a vibrant platform for attendees to exchange ideas, build connections, and enjoy moments of camaraderie.



A powerful keynote by Professor Ijeoma Uchegbu FMedSci, titled “From Homelessness to Head of House,” captured hearts, illustrating how adversity can fuel extraordinary success. Equally impactful was Professor Abubakar Bello’s presentation of Project WIHCN, an ambitious initiative to establish Women’s Health Clinics for breast and cervical cancer screening across states led by women Commissioners for Health.



The conference drew esteemed guests, including First Ladies Dr. (Mrs.) Ibijoke Sanwo-Olu of Lagos State and Mrs. Bamidele Abiodun of Ogun State, Minister of State for Health Dr. Moruf Tunji Alausa, and Professor Akin Abayomi, the Commissioner of Health for Lagos State. Their presence reinforced WIHCN’s mission to champion collaborative solutions for healthcare challenges.



# MRCC FRIENDS SIP & PAINT

Marcelle Ruth Friends is a patient-led support group, dedicated to raising cancer awareness, promoting early detection, and reducing cancer stigma.

The group consists of patients, survivors, and their loved ones, united to spread two vital messages:

1. Early detection saves lives.
2. Cancer is not the end.



Beautiful photos from  
the Sip and Paint

The **Sip and Paint** event held on December 20th, 2024, was a joyful and therapeutic gathering, fostering connection, creativity, and shared hope among members of the group.



# MARCELLE RUTH

CANCER CENTRE & SPECIALIST HOSPITAL

## PATIENT PORTAL



Be more involved in your wellness!

A secure, online platform that allows patients to access personal health information and interact easily with healthcare providers.



You can:

- Medical records
- Book appointments
- Receive test results



Scan this QR-Code

To register and set up your account to start!







MARCELLE RUTH

CANCER CENTRE & SPECIALIST HOSPITAL

---

# Walk against cancer

**5km 07.02.25 07AM**

Help us to close the care gap by  
joining us on a 5km walk from  
Lagos State House Marina to MRCC

---

Sign up using the link

<https://bit.ly/WalkAgainstCancer>





online site

[www.marcelleruth.com](http://www.marcelleruth.com)

Call: +234 906 200 0773



research

volunteer for change!

Call: +234 906 669 5234

**MARCELLE RUTH CANCER CENTRE &  
SPECIALIST HOSPITAL**

**Plot 1192D, Olubosi Close Victoria Island, Lagos, Nigeria**